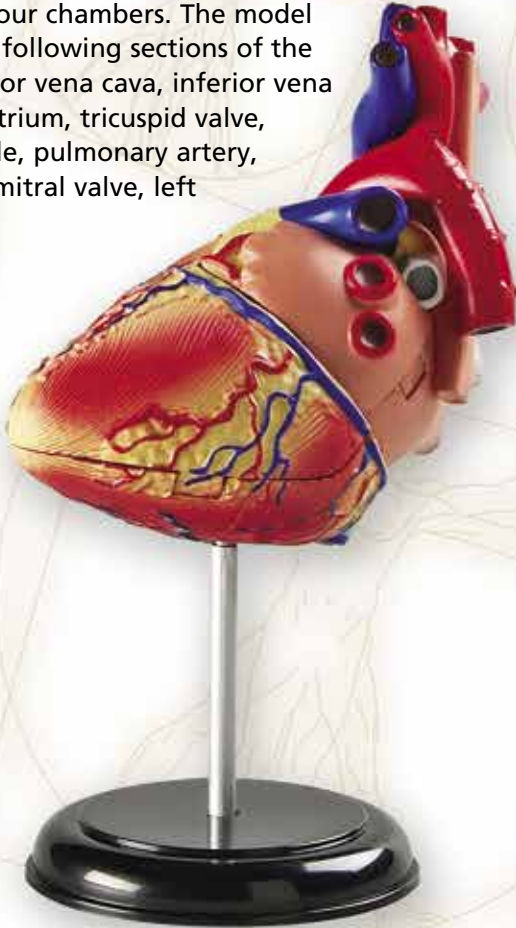


# Human Anatomy Model

## Assembly Guide

This set of twenty-nine pieces connects to form a human heart that displays the organ's major parts. Some pieces are hinged to exhibit the heart's four chambers. The model features the following sections of the heart: superior vena cava, inferior vena cava, right atrium, tricuspid valve, right ventricle, pulmonary artery, left atrium, mitral valve, left ventricle, and aorta.



# Heart

**Look for these related  
items from Learning Resources®**

LER 1902 Cross-Section Heart Model

LER 3330 Spill Your Guts™ A Human Body Game

LER 3336 Anatomy Model - Human Torso



Learn more about our products  
at [LearningResources.com](http://LearningResources.com)



**ADVERTENCIA: PELIGRO DE ATRAGANTAMIENTO.**

Partes pequeñas. No conviene para niños menores de tres años.

**ATTENTION: DANGER D'ÉTOUFFEMENT.**

Petites éléments. Ne convient pas aux enfants de moins de trois ans.

**ACHTUNG: ERSTICKUNGSGEFAHR.**

Kleine Teile. Nicht für Kinder unter drei Jahren geeignet.

© Learning Resources, Inc., Vernon Hills, IL, US  
Learning Resources Ltd., Bergen Way,  
King's Lynn, Norfolk, PE30 2JG, UK  
Please retain our address for future reference.  
Made in China. LRM3334-GUD

Hecho en China.

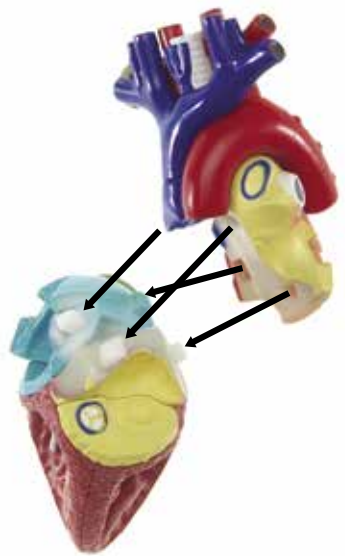
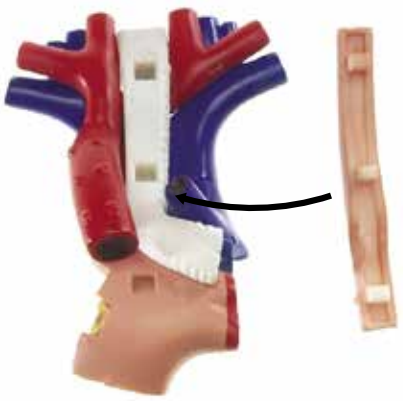
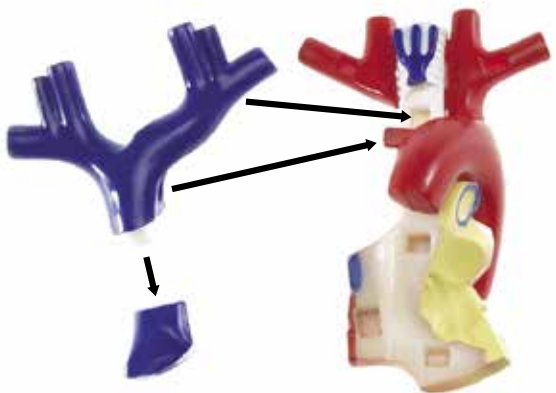
Conserva el envase para  
futuras consultas.

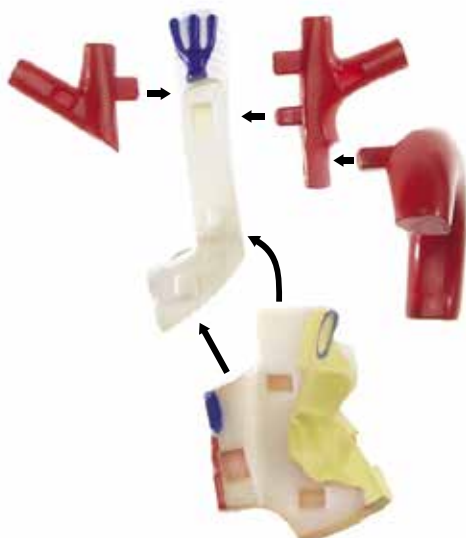
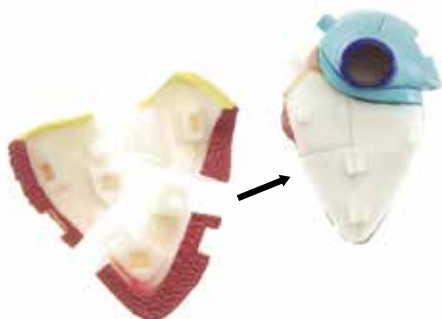
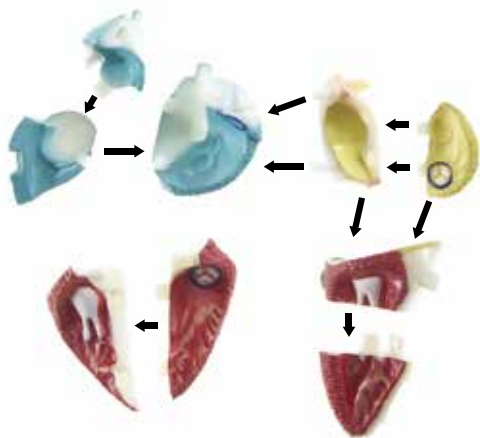
Fabriqué en Chine.

Veuillez conserver  
l'emballage.

Hergestellt in China.

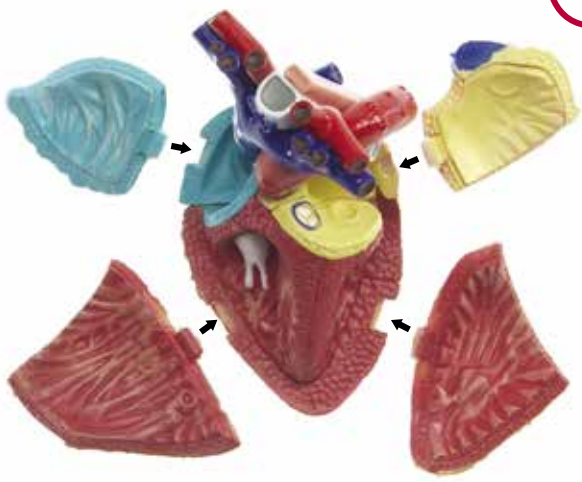
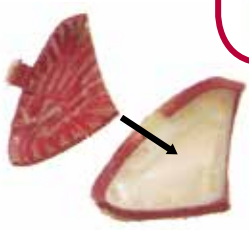
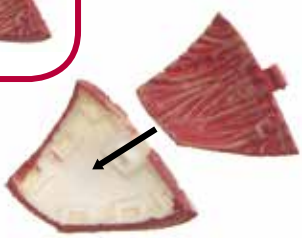
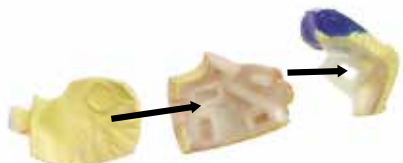
Bitte Verpackung gut  
aufbewahren.







Assembly



**superior vena cava** large vein that carries oxygen-poor blood from the upper body into the right atrium

**inferior vena cava** large vein that carries oxygen-poor blood from the lower body into the right atrium

**right atrium** upper-right chamber of the heart that directs oxygen-poor blood from the superior and inferior vena cava to the right ventricle

**tricuspid valve** separates the right atrium and right ventricle, preventing blood from flowing in the wrong direction

**right ventricle** lower-right chamber of the heart that collects oxygen-poor blood from the right atrium, pumping it through the pulmonary valve into the pulmonary artery

**pulmonary valve** located between the right ventricle and pulmonary artery that prevents blood from flowing in the wrong direction

**pulmonary artery** the only artery that carries oxygen-poor blood from the heart directly to the lungs

**left atrium** upper-left chamber of the heart that pumps oxygen-rich blood from the lungs into the left ventricle

**mitral valve** separates the left atrium and left ventricle, preventing blood from flowing in the wrong direction

**left ventricle** lower-left chamber of the heart that pumps blood from the left atrium through the aorta to the entire body, except for the lungs.

**aorta** largest artery in the body; carries oxygen-rich blood from the left ventricle to the rest of the body, except for the lungs

